



2024 NFHS BASEBALL RULE CHANGES POWERPOINT



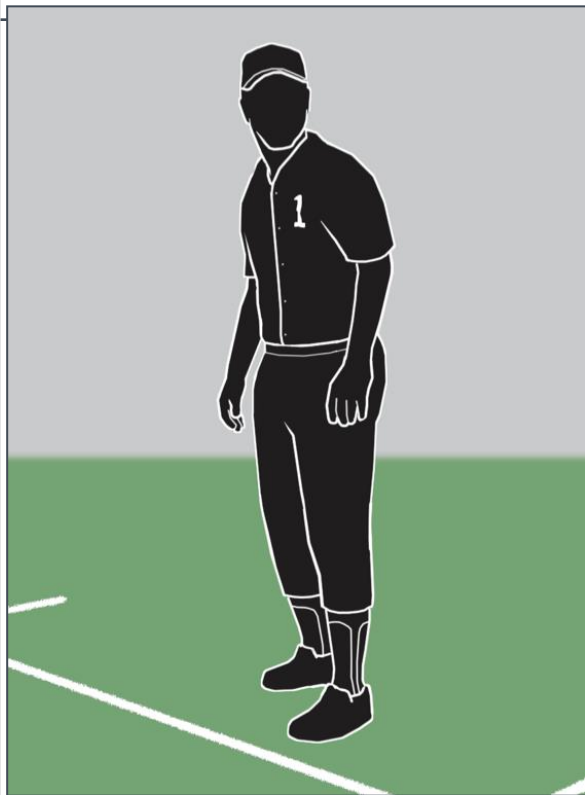
NATIONAL FEDERATION OF STATE HIGH SCHOOL ASSOCIATIONS

- NFHS (located in Indianapolis, IN – Est. 1920):
 - National leader and advocate for high school athletics and performing arts programs.
 - Serves 51 state associations, 19,500 high schools and 12 million student participants.
 - Writes playing rules for 17 high school sports for boys and girls.
 - Offers online education courses for high school coaches, officials, parents, students and others.
 - Ensures that students have opportunity to enjoy healthy participation, achievement and good sportsmanship in education-based athletics.





COACHES UNIFORM



Rule 3-2-1

A coach who is not in the uniform of the team shall be restricted to the bench/dugout.

NFHS: Umpires should know their state association's requirements and procedures for coaches' uniform violations.

NJSIAA: Schools shall set the dress code for their coaches. Uniform apparel shall not contain reference to alcohol, drug use or nudity.





TWO-HOUR TIME LIMIT SUB-VARSITY

A sub-varsity baseball game may be played under a two-hour time limit.

Home School and/or conference shall make the determination.

Home Coach shall announce whether the two-hour time limit will apply at the pre-game conference.

If applicable, the start of the game shall be when the umpire calls "PLAY". The start of an inning begins when the 3rd out of the previous inning is declared.





TWO-HOUR TIME LIMIT SUB-VARSITY

For example:

Plate Umpire calls “PLAY” at 4:01.

The third out of the 5th inning is recorded at 6:00. The sixth inning of the game must be played.

Plate Umpire calls “PLAY” at 4:01.

The third out of the 4th inning is recorded at 6:01. Game is over.



EXTRA HITTER / DEFENSIVE SUBSTITUTION SUB-VARSITY



A coach may play with one of the following options in sub-varsity play.

- 9 Batters bat.
- 10 Batters bat with an extra hitter. Can be any spot in batting order.

Batting order cannot be changed. The starter and any substitute hitter are locked into the position.

Defensively, the coach may interchange the 9 players without regard to the substitution rule.





EXTRA HITTER / DEFENSIVE SUBSTITUTION SUB-VARSITY



RATIONALE:

Coaches wanted to give players more opportunities to play.





AMENDED PITCH COUNT

If a pitcher reaches a pitch limit while facing a batter, the pitcher may continue to pitch until one of the following occurs (~~except for G above~~):



1. The batter reaches base, or
2. That batter is retired, or
3. The third out is recorded to complete that half-inning or game.

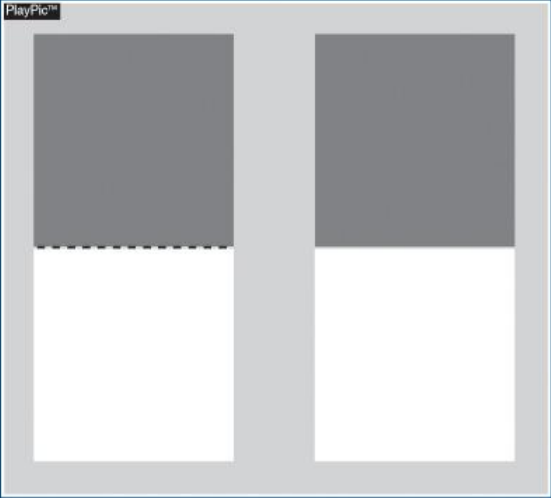
~~Note: Once the 150-pitch limit in five calendar days is reached, the pitcher may not continue with the current batter.~~





DOUBLE FIRST BASE

 Double First Base
Rule 1-2-1 Note 



The diagram shows a top-down view of a double first base. It consists of two rectangular bases side-by-side, separated by a narrow gap. Each base is divided into a top grey section and a bottom white section. A dashed line is visible in the top grey section of the left base. The entire unit is labeled "PlayPic™" in the top left corner.

The double first base can be either a single unit or two separate bases that are flush with each other.

© REFEREE ENTERPRISES, INC. 2007

TR-9

NJSIAA will permit if home team chooses to play with this option.





DOUBLE FIRST BASE

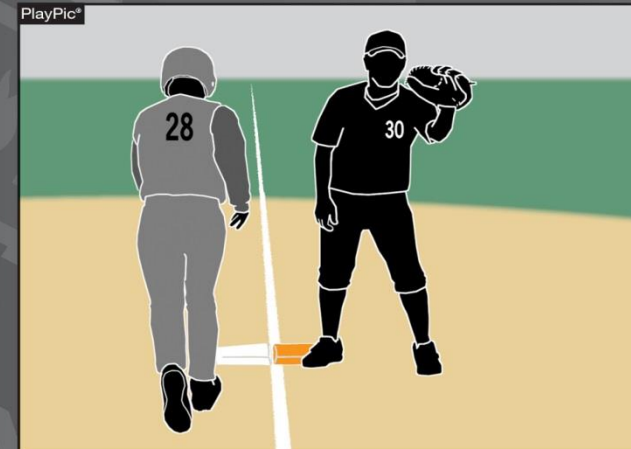
Fielders use
white base

Runners use
colored base
which extends
the 45 foot
lane.



Fielder Using Colored Base

Suggested Double First Base Rules



On a dropped third strike that rolls into foul territory, the fielder is permitted to use the colored base to record the out, while the runner is permitted to use the white base.





NJSIAA BASEBALL EXAM

On the NJSIAA website.

Will be open from February 1 through June 1st.

Passing score = 80%.





UMPIRE REGISTRATION

Log in to NJSIAA.org

Pay the Registration and Criminal Background Check fee.

Attend an Interpretation Meeting

Take the concussion course and notify your chapter secretary.

Take the Implicit Bias course when open.

Be a member in Good Standing with your Chapter.





IMPLICIT BIAS WORKSHOP

Memo:

Winter Sports Implicit Bias Make-ups

Below you will find the registration links to 6 make-up Winter workshops. Pre-registration is required. Each registration link is unique to the specific date and time. Each session will be limited to 100 participants. **Please only register for one session.**

Tuesday, January 30th – 4:00pm

Tues day, January 30th – 8:00pm





IMPLICIT BIAS WORKSHOP

Regular season game assignments will NOT be affected by the status of your completion of this workshop. **Officials will be ineligible for post-season state tournament assignments without participating in the workshop.**

Similar workshops, like the NFHS course, will not be accepted.

These workshops are for WINTER OFFICIALS ONLY. Spring officials will have their own workshops posted at a later date.

Please only register for ONE session. We have many officials registering multiple times and taking much needed spots away from others.



Credit will be confirmed through Zoom attendance reports. Chapters will be sent a list of all officials who have completed the course requirement.

NFHS RULES REVIEW COMMITTEE

- The NFHS Rules Review Committee is chaired by the chief operating officer and composed of all rules editors. After each committee concludes its deliberations and has adopted its recommended changes for the subsequent year, such revisions will be evaluated by the Rules Review Committee.



Davis Whitfield
Chief Operating
Officer



Lindsey Atkinson
Basketball, Girls
Lacrosse and
Volleyball



Bob Colgate
Football and Sports
Medicine



Sandy Searcy
Softball, Swimming &
Diving and Water Polo



Elliot Hopkins
Baseball and
Wrestling



Julie Cochran
Cross Country, Gymnastics,
Field Hockey, Soccer and
Track & Field



James Weaver
Boys Lacrosse
and Spirit



Dan Schuster
Ice Hockey





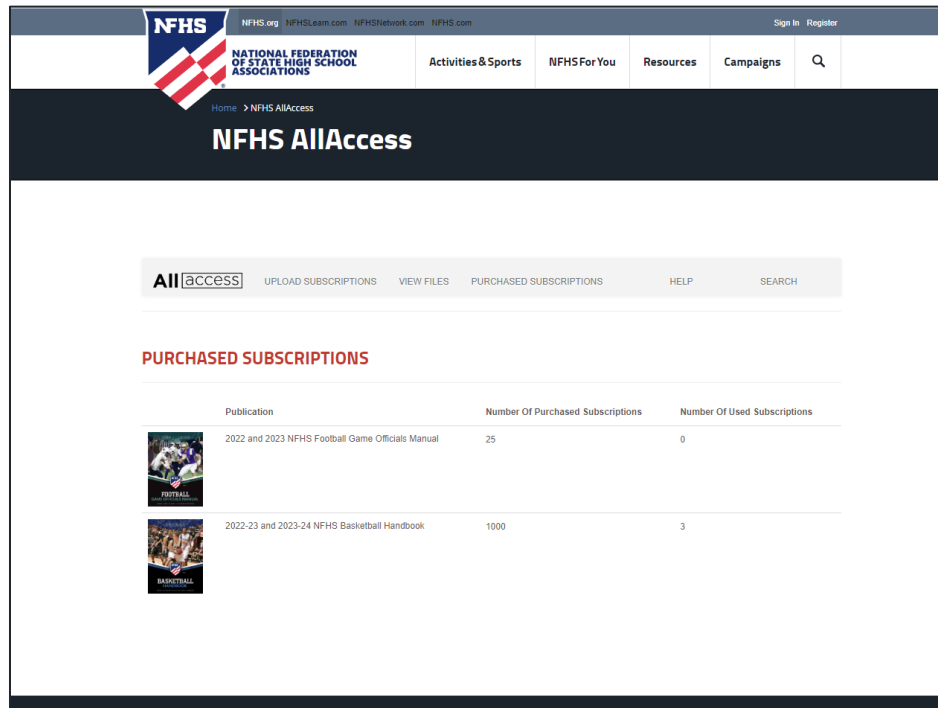
NFHS BASEBALL COMMITTEE PHILOSOPHY

“We are the keepers of Amateur Baseball”



- NFHS Baseball Committee considers these factors when requests are submitted for rules changes.
 1. Risk Management
 2. Balance between Offense and Defense
 3. Keeping with Tradition in an era where the sport is changing on the professional level and student-athletes are bigger, stronger and faster.



NEW NFHS AllAccess – WEBSITE



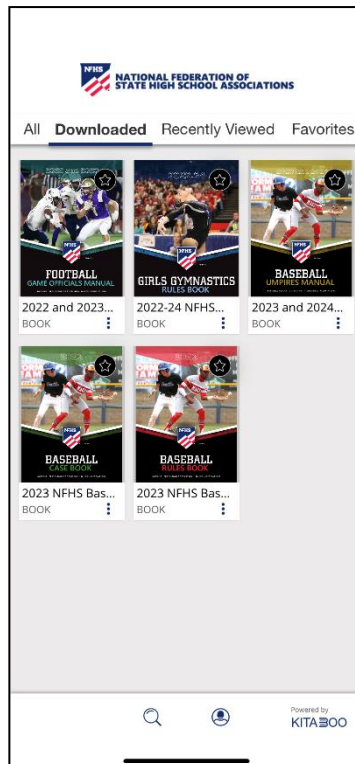
The screenshot displays the NFHS AllAccess website interface. At the top, there is a navigation bar with the NFHS logo and the text "NATIONAL FEDERATION OF STATE HIGH SCHOOL ASSOCIATIONS". Below this, there are menu items: "Activities & Sports", "NFHS For You", "Resources", and "Campaigns". A search icon is also present. The main header area features the "NFHS AllAccess" logo. Below the header, there is a sub-header with the "AllAccess" logo and navigation options: "UPLOAD SUBSCRIPTIONS", "VIEW FILES", "PURCHASED SUBSCRIPTIONS", "HELP", and "SEARCH". The main content area is titled "PURCHASED SUBSCRIPTIONS" and contains a table with the following data:

Publication	Number Of Purchased Subscriptions	Number Of Used Subscriptions
 2022 and 2023 NFHS Football Game Officials Manual	25	0
 2022-23 and 2023-24 NFHS Basketball Handbook	1000	3

- AllAccess is the New NFHS Digital Publications Platform that includes:
 - Rules Publications
 - High School Today Magazine
 - Policy Debate Quarterlies
 - Other NFHS Digital Publications
- Website organized for associations and individuals to assign books and manage purchases
- Visit www.allaccess.nfhs.org



NEW NFHS AllAccess – MOBILE APP



Access Via Website or Mobile App:

- View available publications for sale
- View publications assigned to you
- Download books for offline viewing
- Read publications as an e-book
 - Book features include:
 - Table of contents
 - Highlighting text
 - Creating 'sticky notes' on pages
 - Searching for terms
 - Mark-up pen feature
 - Viewing highlights and notes on data page
- Available on App Store and Google Play





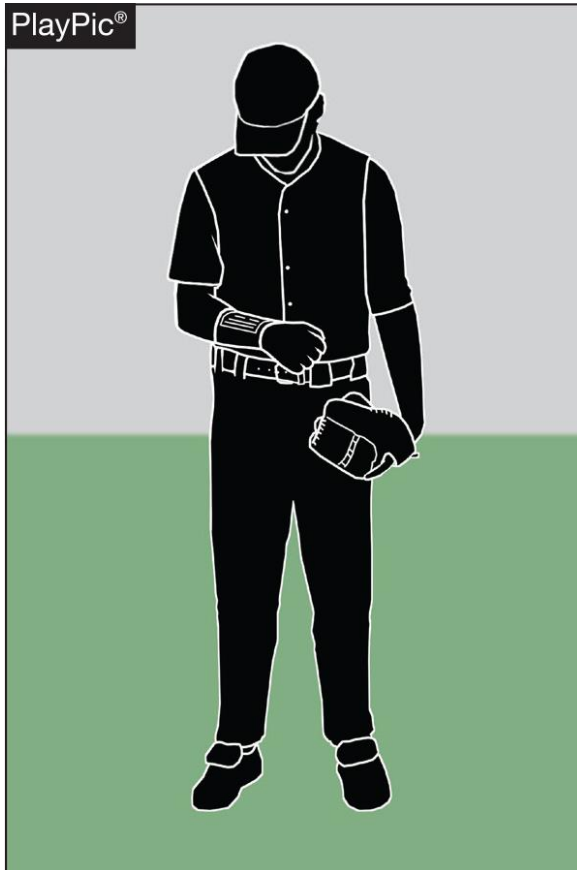
Rules Changes

2024 NFHS BASEBALL





1-6-1 PLAYER COMMUNICATION EQUIPMENT

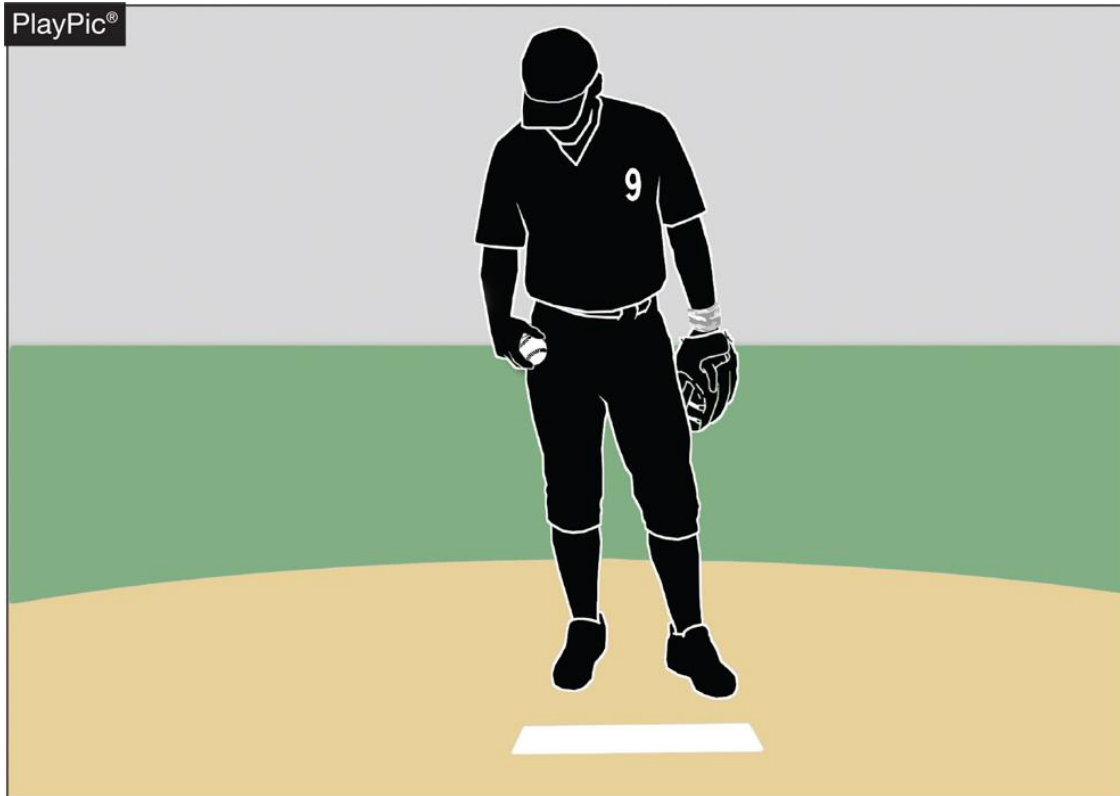


- Any wristband with defensive shifts/offensive plays/pitching choices or game directions attached shall be considered non-electronic equipment and is permitted as long as it a single, solid color.



1-6-1

PLAYER COMMUNICATION EQUIPMENT



- For pitchers, it may not contain the colors white, gray or be distracting.
- It does not have to match the color of the uniform or the sleeves worn underneath the uniform.



1-6-1 PLAYER COMMUNICATION EQUIPMENT



- It shall only be worn on player(s) wrist or forearm and pitchers shall wear it on their non-pitching arm.

Clarification was needed as many states reported that wrist bands were being worn on the belt. This is now prohibited by rule.



1-6-1 PLAYER COMMUNICATION EQUIPMENT



- The penalty for wearing this equipment improperly is a team warning to the coach on a first offense.
- The next offender of that team will be ejected along with the team's head coach.



PLAYER COMMUNICATION EQUIPMENT RULE 1-6-1 (NEW SECTION)

ART. 1 . . . Any wristband with defensive shifts/offensive plays/pitching choices or game directions attached shall be considered non-electronic equipment and is permitted as long as it is a single, solid color. For pitchers, it may not contain the colors white, gray or be distracting. It does not have to match the color of the uniform or the sleeves worn underneath the uniform. It shall only be worn on a player(s) wrist or forearm and pitchers shall wear it on their non-pitching arm.

PENALTY: The umpire shall issue a team warning to coach of the team involved and the next offender(s) of that team will be ejected along with the head coach.

Rationale:

Clarification. With the increase in popularity of these style of communication systems, confusion has been realized when the players wear them other than on their arm. This change will prohibit these types of products from being worn other places.





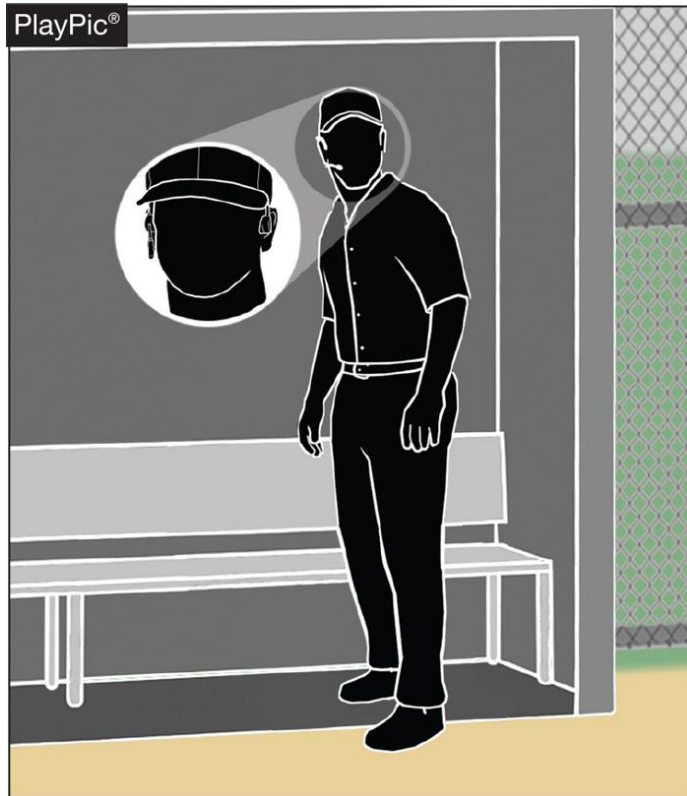
PLAYER COMMUNICATION EQUIPMENT RULE 3-2-5



- One-way electronic communication devices are permissible from the dugout to the catcher while the team is on defense for the purpose of calling pitches.



PLAYER COMMUNICATION EQUIPMENT RULE 1-6-2



- When using the electronic communication device, the coach cannot be outside the dugout/bench area.



PLAYER COMMUNICATION EQUIPMENT RULE 1-6-2 (NEW SECTION)

ART. 2 . . . One-way electronic communication devices are permissible from the dugout to the catcher while the team is on defense for the purpose of calling pitches. When using the electronic communication device, the coach cannot be outside the dugout/bench area.

PENALTY: The umpire shall issue a team warning to coach of the team involved and the next offender(s) of that team will be ejected along with the head coach.

Rationale:

This rule allows for a team to utilize an electronic device for the purpose of calling pitches from the dugout. The device would only be able to be one-way, meaning the player cannot use an electronic device to respond or communicate back to the coach. Various technologies, earpiece, electronic band or a smart watch could be used giving teams several options at varying costs. No other player would be able to wear or use this device nor would the coach be able to communicate with any other player using electronic communication.





NFHS DOES NOT RECOMMEND EQUIPMENT

- At a recent coaches convention, vendors displayed communication devices claiming that they are NFHS approved.
- Only vendors that have a license with NFHS are permitted to place the NFHS logo on equipment.





COACHING (PLAYER COMMUNICATION EQUIPMENT) RULE 3-2-5



- Coaches may not use electronic communication device(s) to communicate with any other team member than the catcher while on defense, or any team member while on offense.

COACHING (PLAYER COMMUNICATION EQUIPMENT) RULE 3-2-5



- The penalty for improper use is a team warning on the first offense.
- The next offender of that team will be ejected, along with the team's head coach.



COACHING RULE 3-2-5

ART. 5 . . . A coach may use a one-way electronic communication device to communicate to the catcher for the purpose of calling pitches. Coaches may not use electronic communication device(s) to communicate with any other team member while on defense or any team member while on offense. When using the electronic communication device, the coach cannot be outside the dugout/bench area.

PENALTY: The umpire shall issue a team warning to coach of the team involved and the next offender(s) of that team will be ejected along with the head coach.

Rationale:

Allows for the coach to communicate with the catcher using an electronic communication device for the purpose of calling pitches.





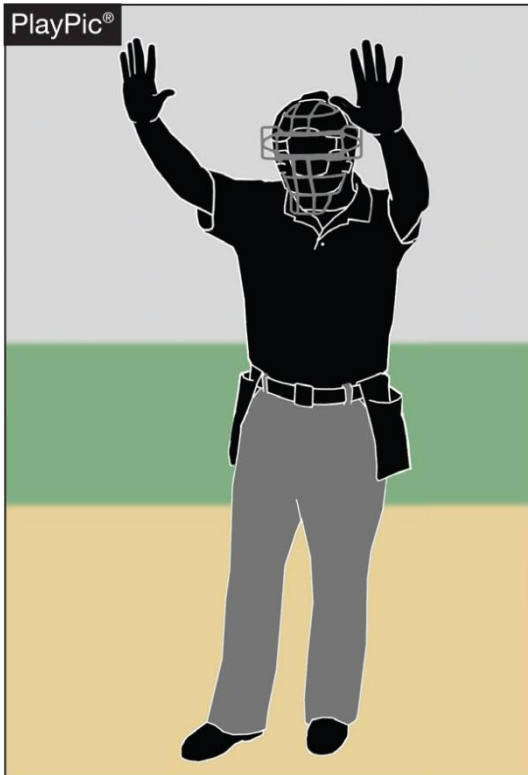
PILOT PROGRAMS

- Louisiana and North Dakota applied for and was granted permission to experiment with equipment that will test the use of electronic communication devices with multiple defensive players.
- Yearly reports with data must reported to NFHS.
- After 3 years, those states would be eligible to submit a rules change proposal to permit this.





UMPIRE-IN-CHIEF RULE 10-2-3h



- The umpire-in-chief may forfeit the game for prescribed infractions by coaches, players or team/bench personnel.

Rule change eliminated Spectators from the statement.

Dealing with unruly fans are not the role of the umpire-in-chief.

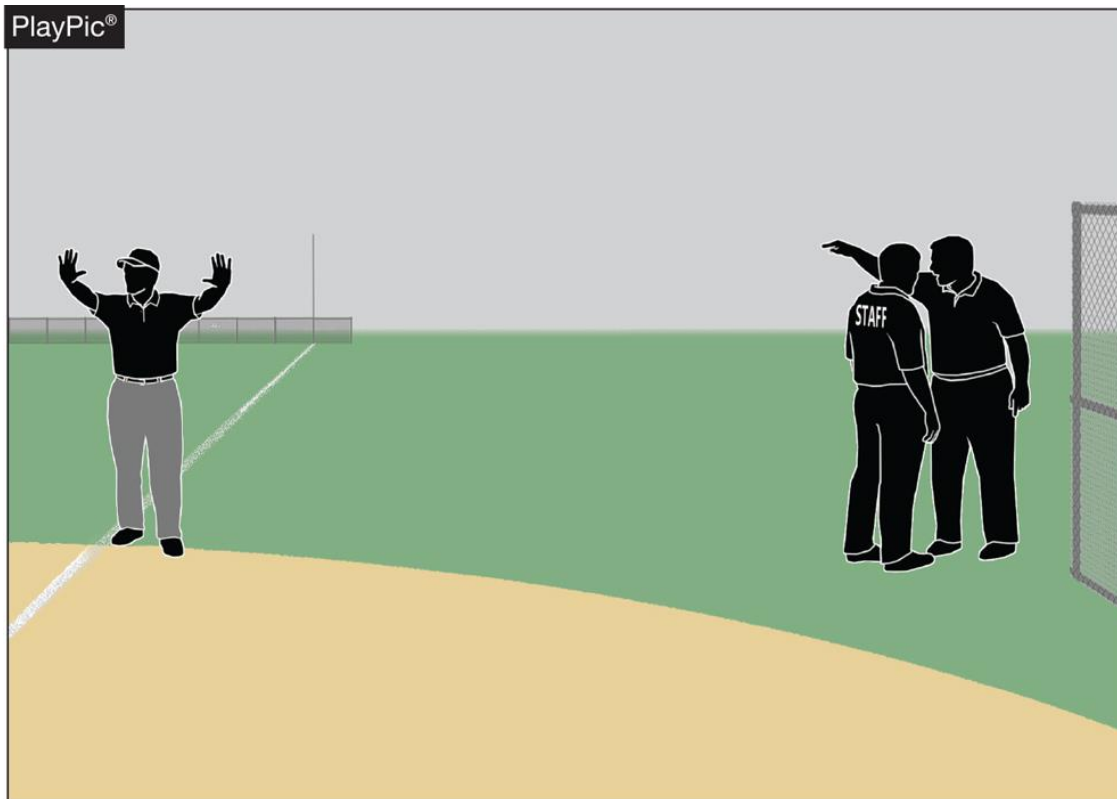
Utilize Site Management.

Read and Understand the NJSIAA Termination of Game procedure.





UMPIRE-IN-CHIEF RULE 10-2-3h



- Umpires have jurisdiction over the confines of the players, coaches and team/bench personnel.
- If there are issues with spectators, it is the responsibility of game management to deal with spectators and to ensure the facility is safe for all involved.



UMPIRE-IN-CHIEF

RULE 10-2-3h

h. Forfeit the game for prescribed infractions by ~~spectators~~, coaches, players or team/bench personnel.

Rationale:

Umpires have jurisdiction over the confines of the field, players, coaches and team/bench personnel. If there are issues with spectators, it is the responsibility of game management to deal with spectators and to ensure that the facility is safe for all involved.



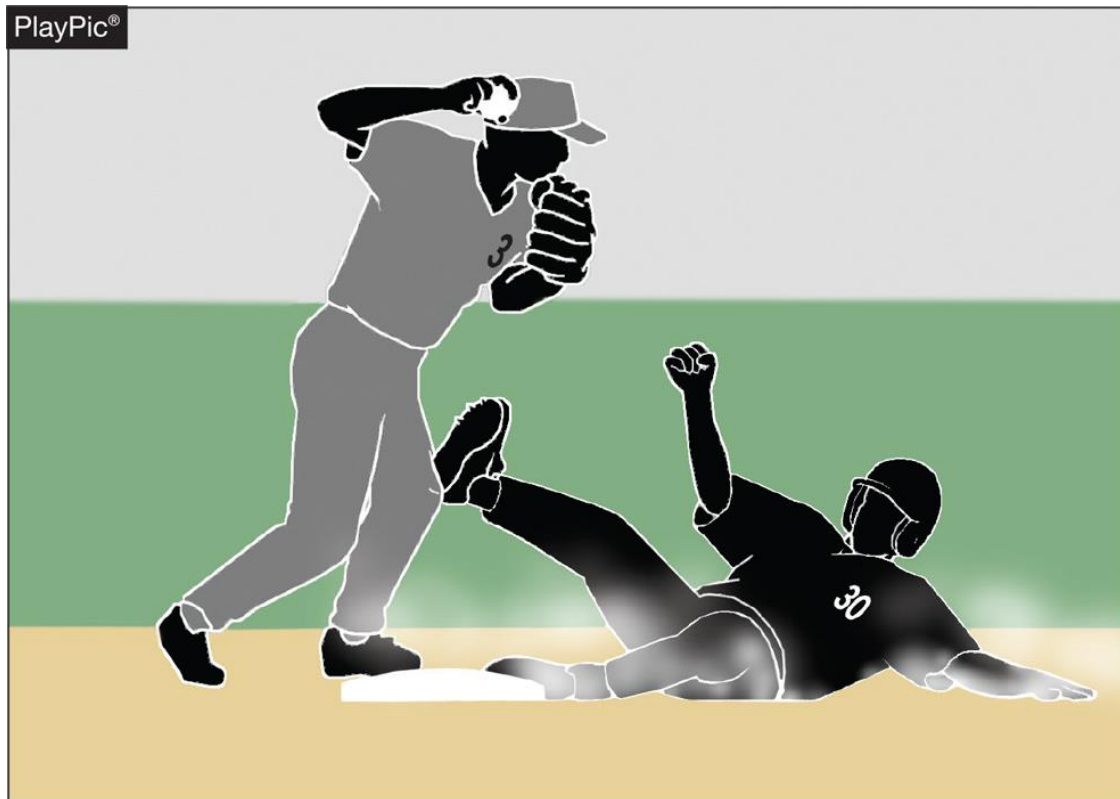


Points of Emphasis

2024 NFHS BASEBALL



MALICIOUS CONTACT



- Malicious contact can be initiated by either an offensive or defensive player(s).
- It should not be confused with incidental contact or “train wreck” plays that sometimes occur in baseball.

MALICIOUS CONTACT



- Contact or a collision is considered to be malicious if it is the result of excessive force and/or there is an intent to injure.
- The absence of these two conditions does not preclude the presence of malicious contact but would provide a reasonable starting point for proper interpretation.



PROFANITY (DIRECT OR INDIRECT)



- Education-based athletics is a direct extension of the classroom.
- There is no excuse for foul language in school or on the baseball field.
- If a teacher would not allow profane language in the classroom, why would a coach permit it on the field?

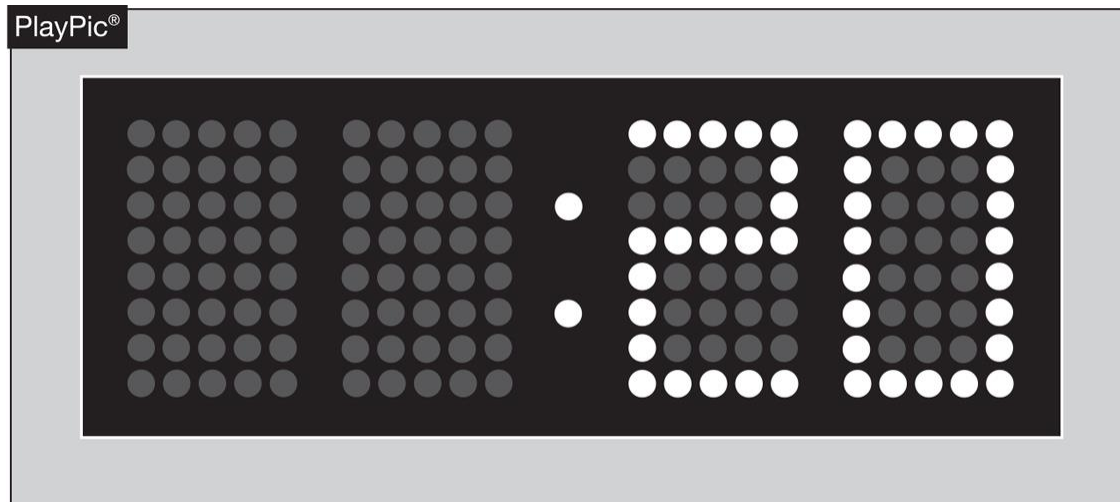
PROFANITY (DIRECT OR INDIRECT)



- The penalties are a verbal warning to the offender on the first offense; a written warning to the offender that warrants restriction to the dugout/bench for the remainder of the game for a second offense; or ejection for a major offense.

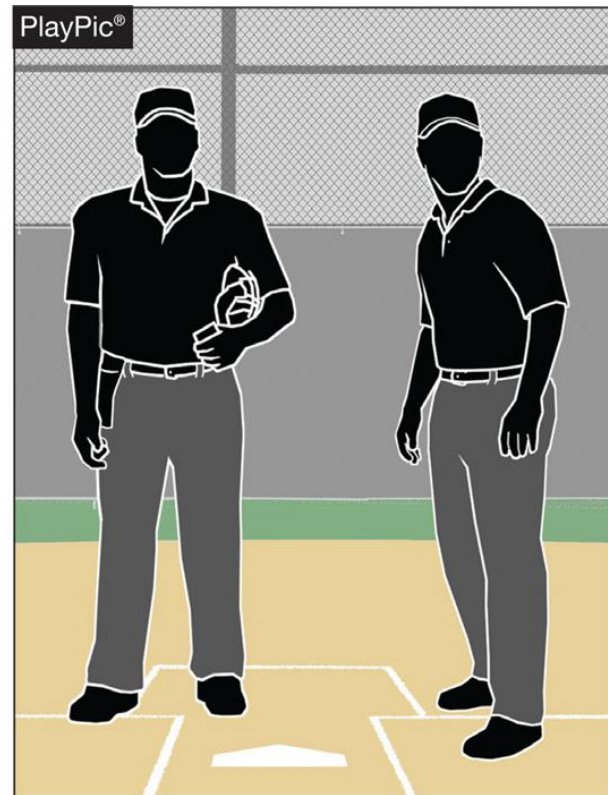
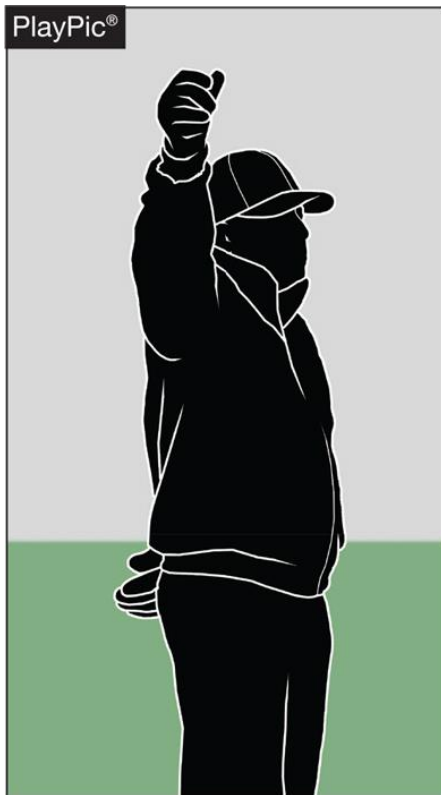


PACE OF PLAY



- A 20-second time limit rule has been in the NFHS rules book since the 1970s.
- The rule is meant to only be utilized when other preventive umpiring measures fail to achieve a reasonable pace or rhythm.

PACE OF PLAY



- By rule, the time between the last out of one half-inning and the first pitch of the next half-inning is 1 minute, 20 seconds.
- Umpires should facilitate this and refrain from visiting with fans or having prolonged discussions with other crew members.



PACE OF PLAY GUIDELINES

- These rules were put in effect in 1978.
- NFHS has not received concerns and is not aware of any issue.
- NCAA took action to speed up the pace of play in 2023.
- Some umpires who work collegiate and high school baseball began to utilize those rules in high school games incorrectly.





PACE OF PLAY

- Umpires should not look for trouble.
- Rules should be used if pace of play violations are excessive or intentional.
- Umpires need to be proactive in getting teams on and off the field between innings.
- Data collected nationwide found that the average high school game lasts 2 hours and 9 minutes.



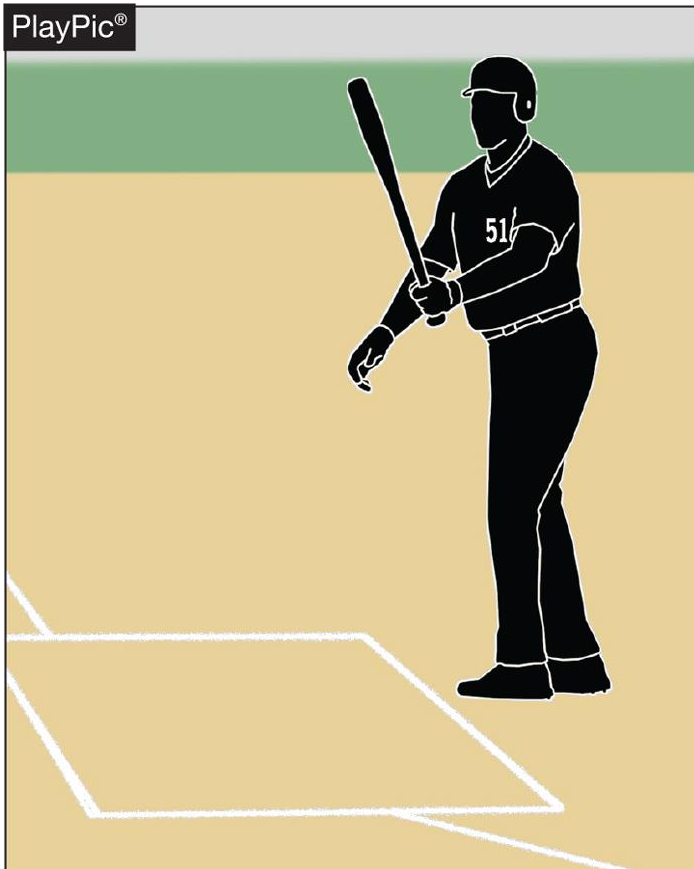


PACE OF PLAY

- Umpires should use preventive officiating if necessary to speed up play.
- Talk to catcher
- Talk to pitcher
- Talk to coach



PACE OF PLAY



- Rule 7-3-1 spells out the situations when a batter is allowed to leave the batter's box.
- Repeatedly stepping out to alter the rhythm of the pitcher or delay the game is not acceptable, and umpire needs to apply the proper penalty.

PACE OF PLAY



- Umpires need to be consistent in monitoring how teams get on/off the field, conferences, enforcing the batter's box rule and in other areas to create a sense of urgency during the contest.



PACE OF PLAY



- Umpires need to recognize when excessive player conferences begin to delay the game, step in and expedite the conclusion of the meeting.



NFHS OFFICIALS EDUCATION





OFFICIALS EDUCATION

CONTENT REMAINS FREE OF CHARGE



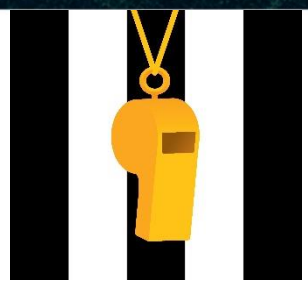
TEACHING
AIDS

RULES
CHANGES

DIAGRAMS

VIDEO
LIBRARY

OFFICIALS
COURSES





THANK YOU

National Federation of State High School Associations

PO Box 690 | Indianapolis, IN 46206

Phone: 317-972-6900 | Fax: 317.822.5700

www.nfhs.org | www.nfhslearn.com | www.nfhsnetwork.com

